



101/202 & KH series Electric Heating Drying Oven

101/202



KH series (101 series upgrade model)



Electric Heating Constant Temperature Drying Oven

2 Year warranty

101: Suitable for routine testing for industrial and mining enterprises, basic laboratory and workshop, not recommended for continuous use

KH: Recommended to use for routine experiment and test, high performance cost ratio.

The drying oven is widely used across various applications, including drying processes, sterilization, constant temperature storage, and heat treatment. It serves as essential supporting equipment in laboratories, scientific research institutions, and industrial laboratories.

Important Safety Note: This product is not suitable for drying or baking volatile, flammable, or explosive materials, as this could lead to an explosion.

Heating Elements

101 Series: This series features heating tubes installed at the bottom of the liner, making it less suitable for samples with high water content.

KH Series: An upgraded model of the 101 series, the KH series has heating tubes installed at the rear of the liner. It features a three-sided circulating air outlet, which provides more uniform airflow compared to the single-sided outlet of the 101 series.

Certifications and Warranty

The drying oven has acquired CE safety certification and comes with a two-year warranty, ensuring reliability and safety in operation.

101 introduction



Features of the Drying Oven

Controller Types: Available in two types: a traditional pointer controller and a modern LED PID controller for precise temperature management.

Durable Shell: Constructed from high-quality cold-rolled steel with a metallic paint spray finish for enhanced durability.

Quiet Operation: Equipped with low-noise fans and an efficient air cycling duct to maintain a quiet working environment.

Chamber Materials: Options for two internal chamber materials: stainless steel for corrosion resistance or galvanized steel for durability.

Adjustable Shelving: The spacing and quantity of shelves can be easily adjusted to accommodate various sample sizes and configurations.

Observation Window: Features a tempered glass observation window in the door, allowing users to monitor samples without opening the chamber.

Improved Heating Element: Utilizes durable heating tubes, offering greater longevity and efficiency compared to older models.

Model	Voltage (V)	Temp range (℃)	Accuracy (℃)	Fluctuation (%)	Power (KW)	Inner size (mm) (H*W*D)	Overall dimension (mm) (H*W*D)	Packing size (mm) (H*W*D)	Net weight (KG)	Shipping weight (KG)
101-0(AS)	220	RT+5 ~300	± 1/ A ± 0.5	± 1	0.8~1.6	350*350*350	590*660*520	710*740*600	34.8	37.2
101-1(AS)					0.8~1.6	450*450*350	690*760*520	810*840*600	41.5	45
101-2(AS)					1.6~2.4	550*550*450	790*870*640	910*950*720	60	64.5
101-3(AS)					2~3	750*600*500	1050*980*700	1270*1060*780	80	84.5
101-3B(S)	220			± 2	2.5-4	750*900*600	1050*1240*860	1270*1320*940	110	116
101-4(AS)	380			± 2	3~4.8	1000*800*800	1300*1210*1000	1420*1290*1080	162	168
101-5(AS)					6	350*350*350	590*660*520	710*740*600	189	197
202-00	220			± 1	0.5	250×250×250	480×520×400	600×600×480	19	21
202-0					0.8~1.6	350×350×350	590×640×520	710×720×600	33	36
202-1					0.8~1.6	450×450×350	670×720×520	790×800×600	39.5	42.5

101: Forced air circulation

202: Natural air circulation

Notes

The modes with “A” is LED microcomputer controller.

The modes with “S” is stainless steel inner.

101-4,101-5 Before the purchase, be sure to enter the door and the elevator size, to avoid the oven shape size is too large to enter.

Optional accessories :

1. Segmented intelligent digital display temperature controller
2. Independent temperature limiting controller
3. Nickel-chromium round steel shelf or perforated shelf
4. The fan independent switch



Segmented temperature controller



temperature limiting controller



Temperature display controller



Vent hole



Cooling motor



Stainless steel inner



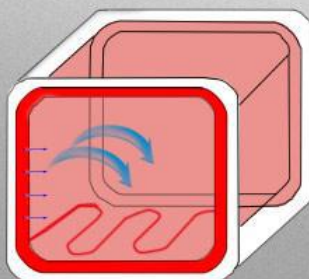
Double-layer tempered glass



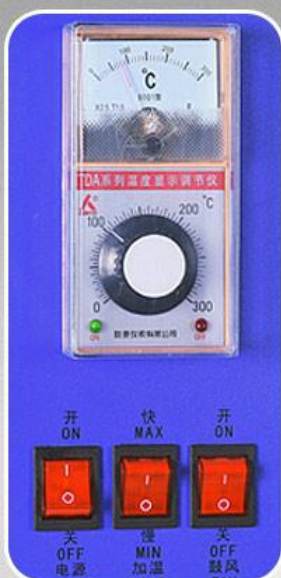
Stainless steel inner (type with "s")



Zinc-painted steel inner



Airflow circulation system



Pointer temperature control

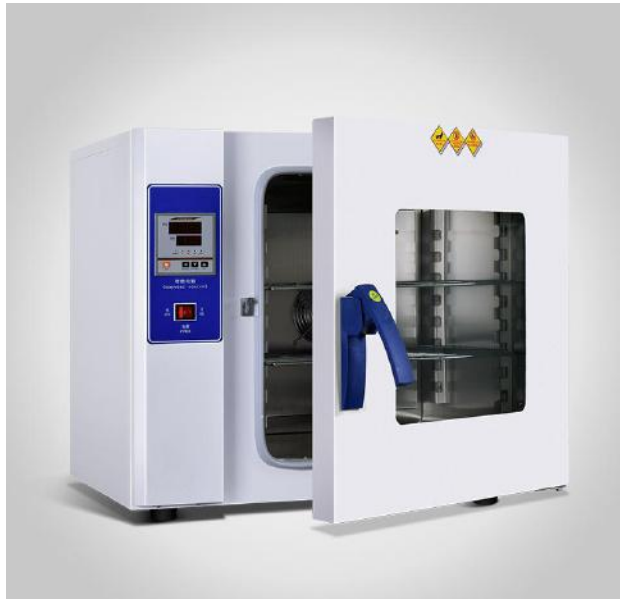


Digital temperature control

Different kind of shelves



KH series(101 series upgrade model)



Structural Features

Microcomputer Control: Equipped with an intelligent PID display that offers precise temperature control, a timer, and over-temperature alarm functions for enhanced safety and performance.

Efficient Air Circulation: Features low-noise fans and a well-designed air cycling duct, ensuring a stable temperature environment for consistent results.

Durable Shell: The exterior is made from steel plates with an electrostatic spray paint finish, complemented by a large observation window in the door for easy monitoring.

Chamber Materials: Offers two options for the internal chamber: stainless steel and galvanized steel. The round corners of the inner chamber facilitate easy cleaning.

Adjustable Shelving: The spacing and quantity of shelves can be adjusted to accommodate various sample sizes and configurations.

Safety Sealing: High-temperature resistant silicone is used for door sealing, while high-temperature heat pipes serve as the heating element, ensuring safety and durability.

Full Stainless Steel Version: This version features both the shell and chamber made of high-quality stainless steel, offering excellent acid-base and corrosion resistance. It is ideal for pharmaceutical factories, food processing, medical research, and other applications requiring high durability and hygiene standards.

Structure

KH series Electric thermostatic drying oven



Digital display panel



Temperature sensor



Silicone seals

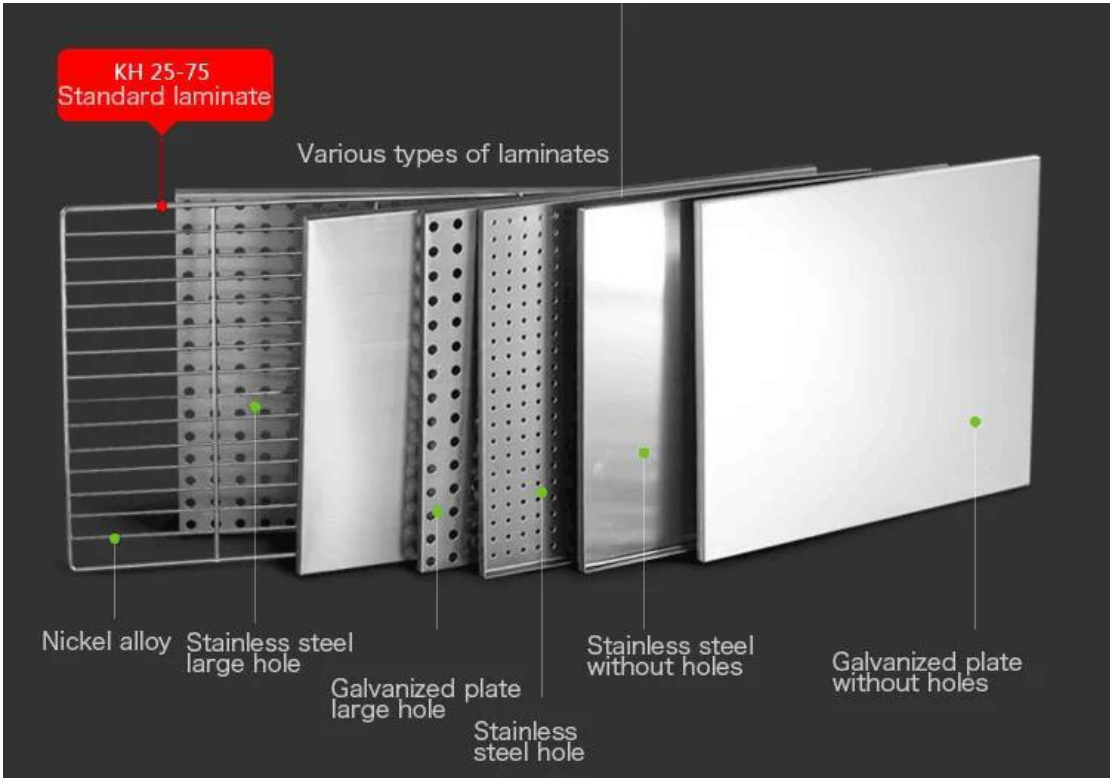
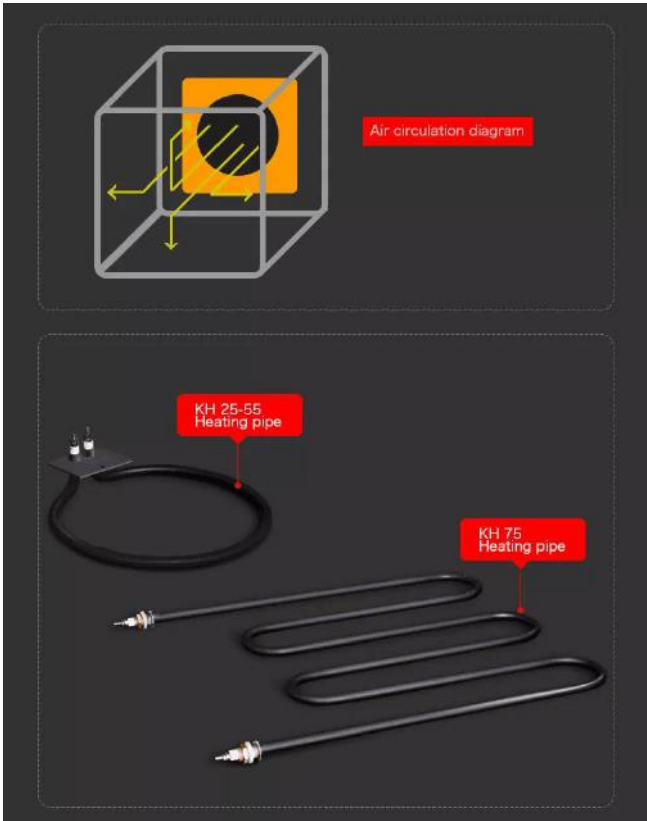




LED temperature controller



Fan motor



Model	Voltage (V)	Temp range (°C)	Timing range	Accuracy (°C)	Fluctuation (%)	Power (KW)	Inner size (mm) (H*W*D)	Overall dimension (mm) (H*W*D)	Net weight (KG)	Shipping weight (KG)
KH-25A(S)	110 / 220	RT+ 5 ~300	0~999 mins/ hours	± 0.5	± 1	0.5	250×250×265	475×540×450		26.5
KH-30A(S)						0.5	300×250×200	475×540×450		26.5
KH-35A(S)						1.2	350×350×350	530×640×550	35	38
KH-45A(S)						1.4	450×450×350	630×740×550	44.5	47.5
KH-55A(S)						2	550×550×450	750×890×630	59.5	63.5
KH-75A(S)						3	750×600×500	980×965×770	93	102
KH-35T						1.2	350×350×350	530×640×550	35.5	38.5
KH-45T						1.4	450×450×350	630×740×550	45	48
KH-55T						2	550×550×450	750×890×630	60	64
KH-75T						3	750×600×500	980×965×770	94	103

With "S" is stainless steel liner, without "S" is galvanized plate liner, with "T" is all stainless steel.

All technical data is under no load conditions , environment temperature 25℃, relative humidity 50%RH, voltage fluctuation ±10%, Under the conditions of test to Setting up a test temperature 10℃/40℃ .

KENTON may change the above technical parameters at any time. There is deviation about product appearance due to some factors such as the photographic or printed result, please understand and reserves the final right of interpretation.

Optional accessories:

1. Programmable controller
2. Individual temperature limit
3. Nickel-chromium round steel shelf or perforated shelf
4. Test hole
5. Air inlet filter
6. Fan independent switch



Programmable controller



Test hole





Temperature limit



Air inlet filter

Comparison for drying ovens.

Drying oven	GX (advanced)	DHG/DHG-C update	KH/A/S basic	101/A/S classic	202/A(no motor fan)
					
controller					
PID LCD	●(“TC”touch screen)	●			
PID digital		“C”●	●	“A”●	“A”●
Pointer				●	●
Brand accessories					
ST bi type silicon	●				
Philip chip	●				
Taiwan optical coupler	●				
Internal material					
SUS304 SS	●				
Mirrored SS		●			
201 SS			“S”●	“S”●	
Galvanized steel			●	●	●
Motor fan					
High temperature resistant bearing	●	●			
Heat dissipation fan	●	●	●	●	
Electric element					
201 stainless steel	●	●			
Carbon steel			●	●	●
Computer interface	●	●LCD			
Networking monitoring	●	●LCD			
Adjustable fan speed	●	●LCD			
ALLHEAT cavity preheat	●				
ALLFLOW airflow	●				
ALLSENS temp.control	●				
insulation	●				
Heating sides	3 sides	9230 above	Single	Single	Single

		double sides			
Air duct	3D air duct	3 sides+ front	3 sides	Single side	
Door seal material	Silicone	Silicone	Silicone	asbestos cord	asbestos cord
Insulation material	aluminium silicate	aluminium silicate	Rock wool	Rock wool	Rock wool
Temp.range °C	RT+5-300	RT+5-300	RT+5-300	RT+5-300	RT+5-300
Temp accuracy °C	±0.1	0.1/ 'C'-0.5	±0.5	±1	±1
fluctuation	±0.5%	±1%	±1%	±1%-2%	±2%
timer	●	●	●	“A”●	“A”●
Over temperature alarm	●	●	●	“A”●	“A”●
warranty	3 years	2 years	2 years	2 years	2 years

KENTON APPARATUS LTD.

Manufacture of drying oven, lab incubator, climate chamber, laminar flow cabinet, biological safety cabinet(OEM,ODM)

Kenton is a laboratory instrument manufacturer. In 1999, Kenton produced the first batch of 101 series drying oven and launched them on the market. Later, it successively launched incubator, biochemical incubator and other series. In 2005, we obtained ISO: 9001 quality certification, and in 2008-2012, we successively obtained CE certification. In 2013, a new generation of product series was introduced, and its functions and uses were comprehensively upgraded. The liner material was upgraded to SUS 304 stainless steel. In 2011, we expanded the global market, and now our products are sold to Europe, America, Southeast Asia major markets. Kenton manufactures laboratory equipment under our own brand. Our product line includes biological safety cabinets, artificial climate chambers, drying ovens, incubators, high temperature chambers, humidifiers, water baths, industrial air ovens, laminar flow cabinet, biochemical incubators, vacuum ovens, constant temperature and humidity chambers, and light incubators, among other series. The 30,000 sets produced annually are expected to expand at a pace of 20% annually. It has emerged as South China's biggest and most significant equipment manufacturer. The business has launched Kenton Technology Ltd. to concentrate on the development of supporting equipment in the disciplines of biological research and life sciences, in response to changes in worldwide market demand. We increased the new product series, which includes: blood oscillator, anaerobic oven, (Ultra)low temperature refrigerator, non-pipeline clean gas fume hood, sterile isolation cabinet, drug testing safety cabinet, etc., via independent research and development and technical advancement. Numerous scientific research departments, medical preservation, genetic vaccination, and other businesses make extensive use of our goods. In the meanwhile, we have expanded our recognition and support and have sold to Europe, America, Southeast Asia, Australia, the Middle East, and other international markets thanks to consistent investment, research and development, and advancements in workers, equipment, and technology. To supply top-notch goods and services to reputable laboratories and scientific research centers, as well as to mining and industrial companies both domestically and internationally.

<https://www.kentonchina.com/>

E-mail: kenton@kentonchina.com

Address: No.2, Hualong Rd, Donghua industrial zone, Renhe town, Baiyun district, Guangzhou China

Tel: 86-020-36246586, 36247961, 36246650, 36246651

