



KH industrial drying oven

KYS commercial drying oven

Hot air drying oven

Big capacity, size can be customized

Suitable for industry and mineral fields



Recommended: Suitable for industrial and mining enterprises for mass production, continuous use for a long time.

Product Grade: ★★★★★

It is used for dehydration and drying of products, such as electroplating industry, electronic industry, oil dripping of alloy jewelry, food and plastic industry, leather industry, hardware and other production industries, but it is not suitable for highly volatile, flammable and explosive materials to avoid explosion. (if there is a need for explosion-proof, safety facilities such as explosion-proof lock.

Structure features:

- ❖ Digital PID controller, with intelligent PID to reduce temperature surge, standard independent temperature limit device, automatic power off over temperature, effectively protect the sample.
- ❖ Aluminum housing and high temperature resistant bearing circulating fan, better heat dissipation and long working time.
- ❖ The maximum temperature is available in three different series: 150℃, 250℃, and 300℃, all with timing and over-temperature alarm functions.
- ❖ According to the size of the oven, it is divided into horizontal and vertical hot air circulation and single and double door designs.
- ❖ The large diameter centrifugal fan and evenly distributed heat source, combined with the optimized air duct design, make the temperature of each area in the oven uniform.
- ❖ The distribution box and circuits comply with international safety standards, and continuous operation ensures safe use.
- ❖ The inner tank can be made of galvanized steel plate or stainless steel plate, with large storage capacity and rapid heating characteristics.
- ❖ Equipped with durable door hinges and handles, high-quality sealing door strips and thickened insulation layer to achieve better insulation effect and lower energy efficiency.
- ❖ This series of products has passed the EU CE safety certification, and enjoys a 2-year quality warranty period.

Model number	voltage	Temp. range ℃	Time r	accuracy ℃	fluctuation%	power KW	interior (mm) (H×W×D)	exterior (mm) (H×W×D)	packing (mm) (H×W×D)	N.W KG
KH-100C	380 V	“A” RT+5 ~250 “C” RT+5 ~300	0~ 999h/ m	±0.5	±2	4~6	1000×600×500	1750×1130×700	1870×1210×780	152
KH-100A(S)						4~6	1000×600×500	1750×1130×700	1870×1210×780	152
KH-110C						6~8	1000×800×600	1800×1350×800	1920×1430×880	170
KH-110A(S)						6~8	1000×800×600	1800×1350×800	1920×1430×880	170
KH-120C						8~12	1200×900×800	2000×1450×1000	2120×1530×1080	214
KH-120A(S)						8~12	1200×900×800	2000×1450×1000	2120×1530×1080	214
KH-130A(S)						10-14	1300×1000×1000	Fan can be disassembled		
KH-150A(S)						12-16	1500×1200×1000	Fan can be disassembled		

- 1.KH-130A(S),KH-150A(S) Delivery within 10-15 days after ordering, please consult customer service
- 2.The modes with “S” is stainless steel chamber.
- 3.Warning: Before purchasing KH-130A(S) and KH-150A(S), please be sure to measure the size of the entrance door and the elevator to avoid the box being too large to enter. If the height is too high, the motor part can be separated and assembled after entering.

Model “A” is prior to “C”:

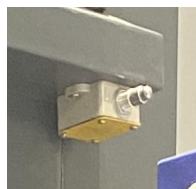
1. "A" is intelligent temperature controller with LCD screen, with computer interface for networking, and "C" is equipped with digital temperature controller as standard.
2. "A" is equipped with digital temperature limiter and temperature controller for dual protection, and "C" is equipped with temperature control and temperature limiter for dual protection.
3. "A" is equipped with high-temperature silicone door seal, and "C" is asbestos fiber door seal (silicone door seal has better sealing and no pollution)
4. "A" is equipped with progressive locking door buckle, thickened hinged door, double-door oven body is equipped with a stainless steel handle as standard, and "C" is spring-type door buckle (progressive door buckle has better sealing effect).
5. "A" is equipped with aluminum shell heat-resistant bearing motor, and "C" is an iron shell motor, which has poor heat dissipation than aluminum shell.
6. "A" uses high-temperature resistant material heating tube and international brand electrical components, which are more durable.
7. "A" and "C" are equipped with over-temperature buzzer reminders as standard.

Optional accessories:

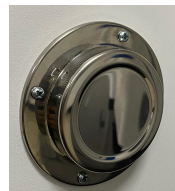
1. Sound and light alarm system
2. Door opening power off device
3. Shelf-type cart
4. Load-bearing square tube shelf
5. Programmable segmented temperature controller
6. 485 interface for connecting to computer
7. Data record storage with USB interface
8. Air filter at air inlet
9. Test hole



Alarm system



Door opening power off device



Test hole



Programmable controller



485 interface



Air filter

Comparison of different models

Industrial oven	KH-120A/S upgrade	KH-110A/S upgrade	KH-100A/S upgrade	KH-120C basic	KH-110C basic	KH-100C basic
controller						
PID LCD 485 interface	●	●	●	●	●	●
PID Digital Display				●	●	●
Internal material						
201 SS	“S”●	“S”●	“S”●			
Galvanized steel	No“S”●	No“S”●	No“S”●	●	●	●
Circulating fan, large diameter wind wheel						
High temperature resistant bearing	●	●	●			
Alu motor shell	●	●	●			
Carbon steel motor shell				●	●	●
heater						
High power finned heater	●	●	●			
Electric heater				●	●	●
Reinforced door handle and door hinge	●	●	●			
Strengthen chamber structure	●	●	●			
door	Double door	Single door	Single door	Double door	Single door	Single door
Horizontal Air circulation		●	●		●	●
Vertical air circulation	●			●		
Heating sides	3 sides	Single side	Single side	Double sides	Single side	Single side
Door seal material	High temperature silica gel	High temperature silica gel	High temperature silica gel	asbestos cord	asbestos cord	asbestos cord
Temp.range	RT+5-250			RT+5~300		

°C						
Temp accuracy °C	±0.5	±0.5	±0.5	±0.5	±0.5	±0.5
fluctuation	±2%	±2%	±2%	±2%	±2%	±2%
timer	●	●	●	●	●	●
Over temperature alarm	●	●	●	●	●	●
warranty	2 years					

KH-100, KH-110



Compared

KH120 series Large industrial oven



Difference between Type C and Type A/AS

C-type product structure is weaker than A/AS type frame, limited load-bearing, cast iron motor, asbestos door seal, roller type door handle, not suitable for long-term uninterrupted use

Options

KH120 series Large industrial oven



Leakage switch
(380V voltage to be installed)



Audible alarm



Independent
temperature limiter

KH120



Cart version

Easy to take and place the baking materials, reduce labor intensity and increase efficiency, cabinet, cart specifications, functions can be customized, there are special requirements please provide sample drawings and size instructions



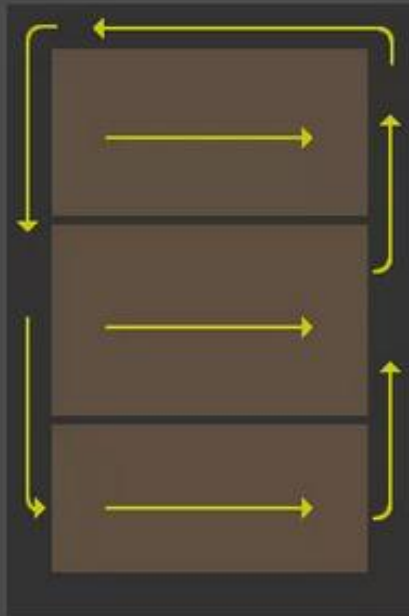
Type 120
heating tube

100 type
heating tube

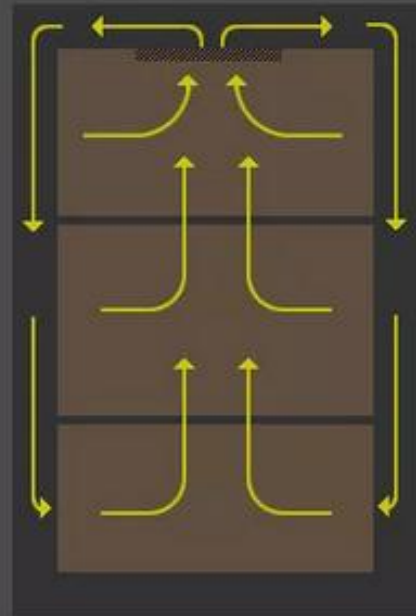


Efficient and durable heat pipe

High-quality heat pipe heating, rapid heating, uninterrupted thermostatic heating



Left and right circulation ducts
(KH-100/110 series)



Up and down circulation air duct
(KH-120 series)

Cast aluminum motor
100/120A/AS Standard



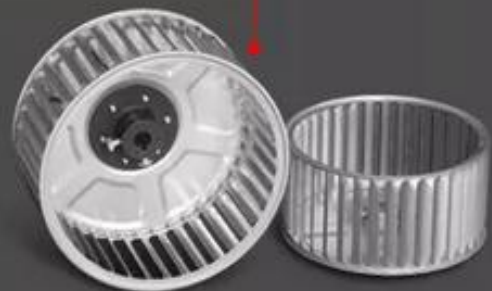
Fast heat dissipation,
high durability, suitable
for long-term uninter-
rupted use

Cast iron motor
100/120C
Standard

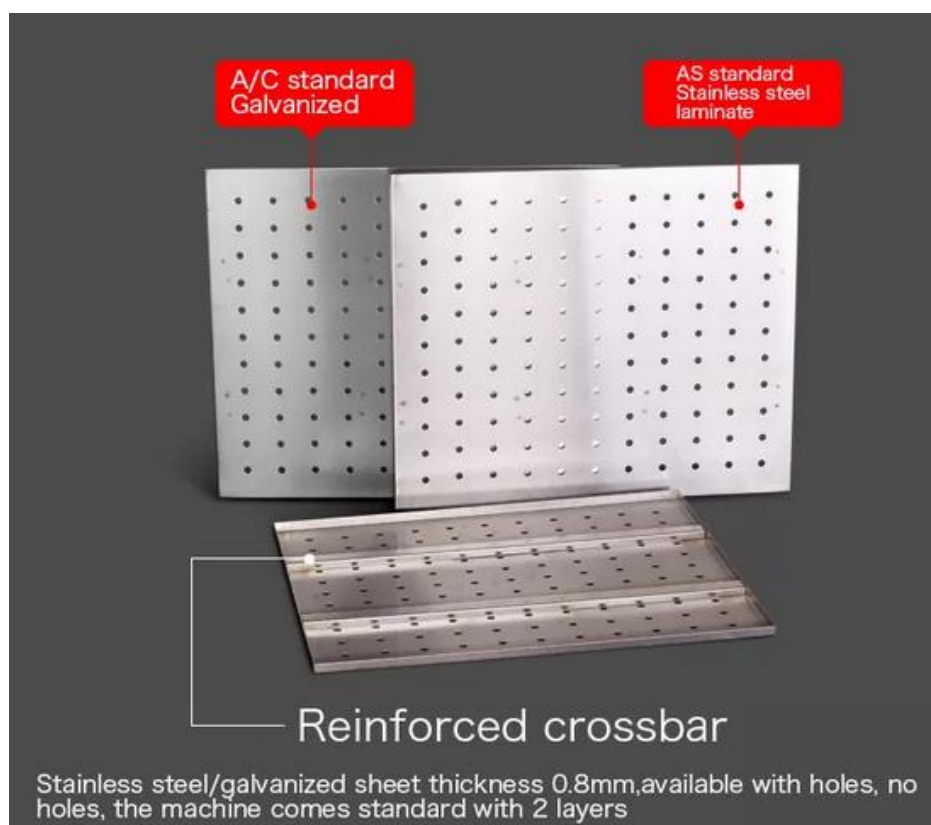
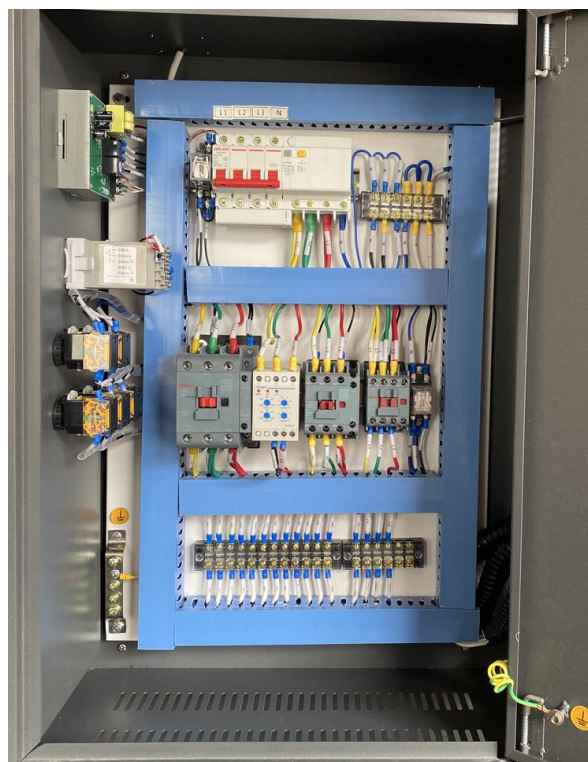
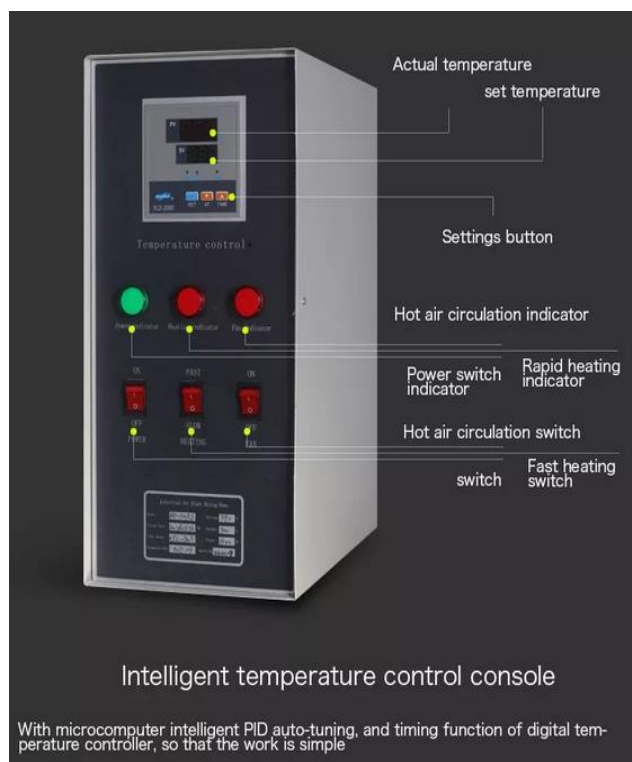


Cooling is not
as good as
cast aluminum,
it is not recom-
mended to use
for a long time

Large diameter
centrifugal wind wheel



Efficient air circulation mak-
es the temperature in the
chamber even and the fluc-
tuation is small



KH-G Hot air circulation Industrial Commercial drying oven

(Advanced customized configuration)



Electrical control box



Sound and light alarm



Control Panel



304 Stainless steel liner



Double lock handle



Convenient lock

Advanced customized configuration

No	Parts Name	Specification	quantity
1	Oven	Customized color	1
2	Intelligent multi-function temperature controller	2612R	1
3	Over temperature protector		1
4	aluminum housing motor	550/750W	1
5	International brand AC contactor	CJX2	3
6	Emergency power off switch		1
7	Stainless steel seamless heating tube	4-15KW	
8	Miniature circuit breaker (with leakage current)	63A/3P	1
9	Limit switch	JW2-11H/L	1
10	Stainless steel liner	Select 201/304/316	1
11	One-touch stainless steel door handle		1/2
12	Thickened industrial door hinge		2/4
13	Sound and light alarm system		1
14	Electrical control box	CE EU standards	1
15	High density thermal insulation cotton		
16	High temperature door seal (asbestos/ceramic/silicone)	250/300/400°C	1

KYS Commercial Drying Oven

KYS Commercial Drying Oven is ideal for commercial and industrial batch drying applications, including electroplating, electronics, food pre-treatment, and agricultural products (e.g., grains, herbs, seafood). With temperatures up to 150°C, it is more energy efficient than industrial ovens. Operation features durable heating elements and forced air circulation for uniform drying. This commercial dehydration oven is suitable for continuous use, but is not suitable for handling volatile and flammable materials. It effectively removes moisture through a controlled hot air flow while keeping operating costs low.

KYS parameters

Model name	Model number	Working area MM (H×W×D)	Exterior MM (H×W×D)	Packing MM (H×W×D)	Voltage V	Power KW	Temp.range °C	Accuracy °C	Fluctuation °C	G.W KG	shelves
Commercial drying oven	KYS-80AS	800x600x430	1220x735x680	1370x830x760	220	2.4	RT+5~150	±0.5℃	±1%	90	4
	KYS-110AS	1100x600x430	1890x1100x650	2050x1220x770	220	3.6	RT+5~150	±0.5℃	±1%	168	5
	KYS-120AS	1200x840x630	1910x1330x820	2050x1450x940	380	7.2	RT+5~150	±0.5℃	±2%	230	10

KYS-110AS



KYS-120AS



KENTON APPARATUS LTD.

Manufacture of drying oven, lab incubator, climate chamber, laminar flow cabinet, biological safety cabinet(OEM,ODM)

KENTON Apparatus Limited was found in 1999, production plant was set in Guangzhou, China. It is mainly engaged in production, sales and export of laboratory thermostatic equipment and biological scientific equipment, and has provided high-quality products and services for professional laboratories and scientific research institutions at domestic and abroad for many years.

We rely on an international professional R & D team to keep the design and technology of products in step with the world and constantly seek breakthroughs.

Since its establishment, the company has been focusing on thermostatic equipment products in related fields. Now it is a high-tech enterprise integrating science, industry and trade. Its business covers China, Southeast Asia, America, Europe, Australia and other countries.

